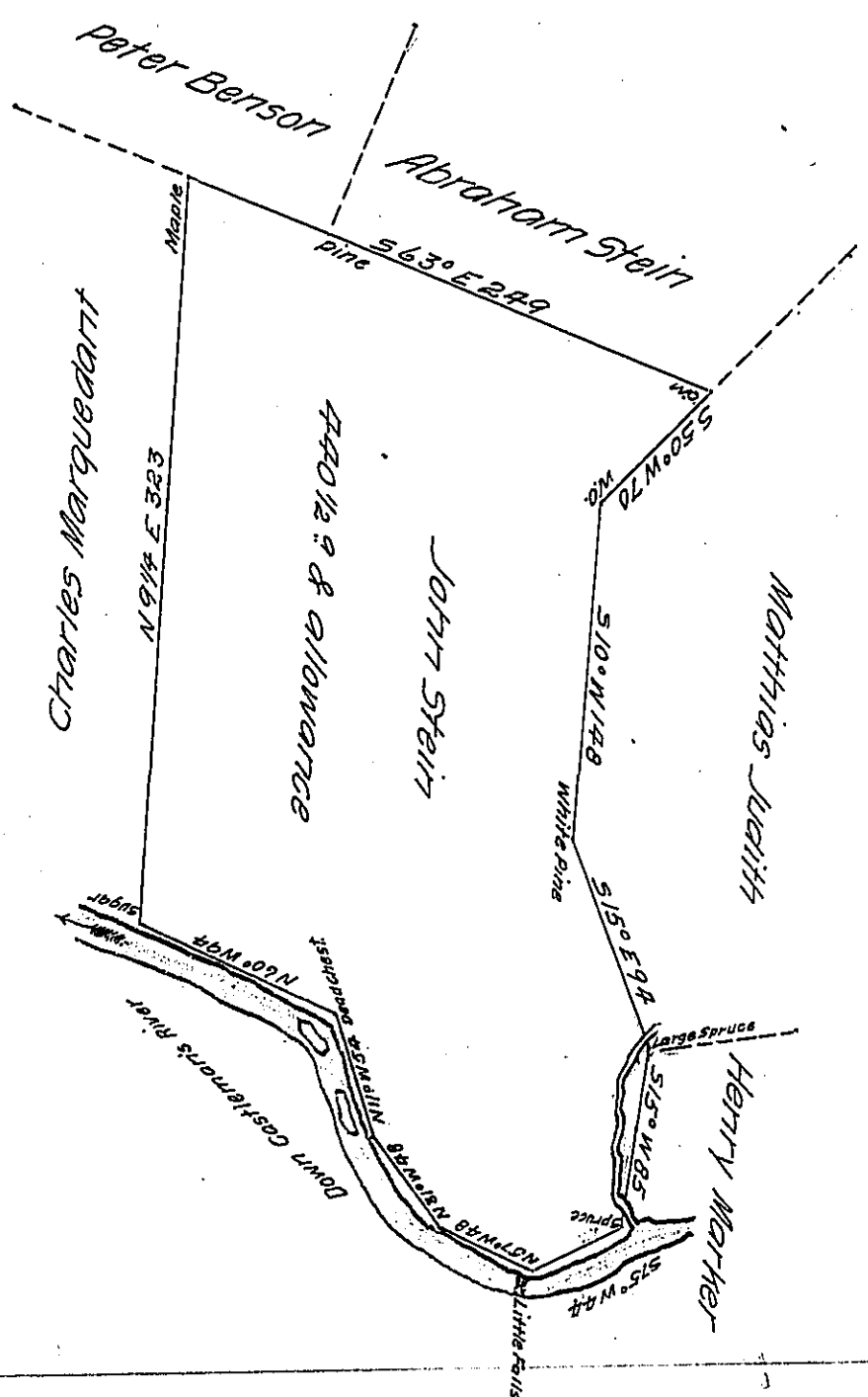


FORM NO 1.



Situate on the North side of Castleman's River below the mouth
 of Pine run in Brothers Valley Township Somerset County and surveyed
 the 2nd day of August 1795 in pursuance of a warrant dated the
 1st day of August 1794

To Daniel Brodhead Esquire } P^r Alexander McGlean Deputy
 Surveyor General

IN TESTIMONY that the above is a copy of the original remaining on file in
 the Department of Internal Affairs of Pennsylvania, made
 conformably to an Act of Assembly approved the 16th day of
 February, 1833, I have hereunto set my Hand and caused
 the Seal of said Department to be affixed at Harrisburg,
 this seventh day of March 1907

Isaac D. Brown
 Secretary of Internal Affairs.